



JOBSITE STORAGE SOLUTIONS

INSTALLATION MANUAL

CART ARMOUR™ CA-06 and CA-07

CA-06 DESIGNED TO FIT SUNCAST CART #PUCD1937/PUCHD1937

CA-07 DESIGNED TO FIT SUNCAST CART #PUCD2645/PUCHD2645

Suncast is a registered trademark.

There is no affiliation, sponsorship or association between Knaack LLC and said owner.



CA-06 SHOWN

NOTICE

ATTENTION: PLEASE READ AND UNDERSTAND ALL INSTRUCTIONS AND WARNINGS BEFORE ASSEMBLING, INSTALLING OR USING THIS PRODUCT.

Werner Co.
93 Werner Rd.
Greenville, PA 16125

724-588-2000
888-523-3371 toll free/ llamada gratuita
888-456-8458 fax

DANGER

- DO NOT store fuels, flammables or any hazardous materials in this cart.
- USE this cart to store and transport electrical tools, hand tools and work related equipment and materials.
- DO NOT sit or stand on cart or place any ladder or other device to gain additional height above the cart.
- Always secure or block cart wheels to prevent any unintended movement.
- Cart doors must be locked when transporting.
- Cart must be tied down when transporting in any vehicle.

CAUTION

Any modification or unintended use of this product shall immediately void all manufactures warranties. Manufacture disclaims all liability for injuries to persons or property resulting from any modification to, or unintended use of this product.

NOTICE

Manufacturer disclaims all liability for injuries to persons or property resulting from any unintended use of this product.

Tools Required

- HAMMER
- ELECTRIC DRIVER
- 7/16" SOCKET
- 5/16" SOCKET
- 3/8" WRENCH
- 7/16" WRENCH
- 6" EXTENSION (3/8" DRIVE)

Parts List

- | | |
|---------------------|--------|
| • END PANEL-LEFT | QTY. 1 |
| • END PANEL RIGHT | QTY. 1 |
| • BACK PANEL | QTY. 1 |
| • DOOR PANEL | QTY. 1 |
| • LEFT FRONT PANEL | QTY. 1 |
| • RIGHT FRONT PANEL | QTY. 1 |
| • DOOR LATCH | QTY. 1 |
| • GROMMET | QTY. 1 |

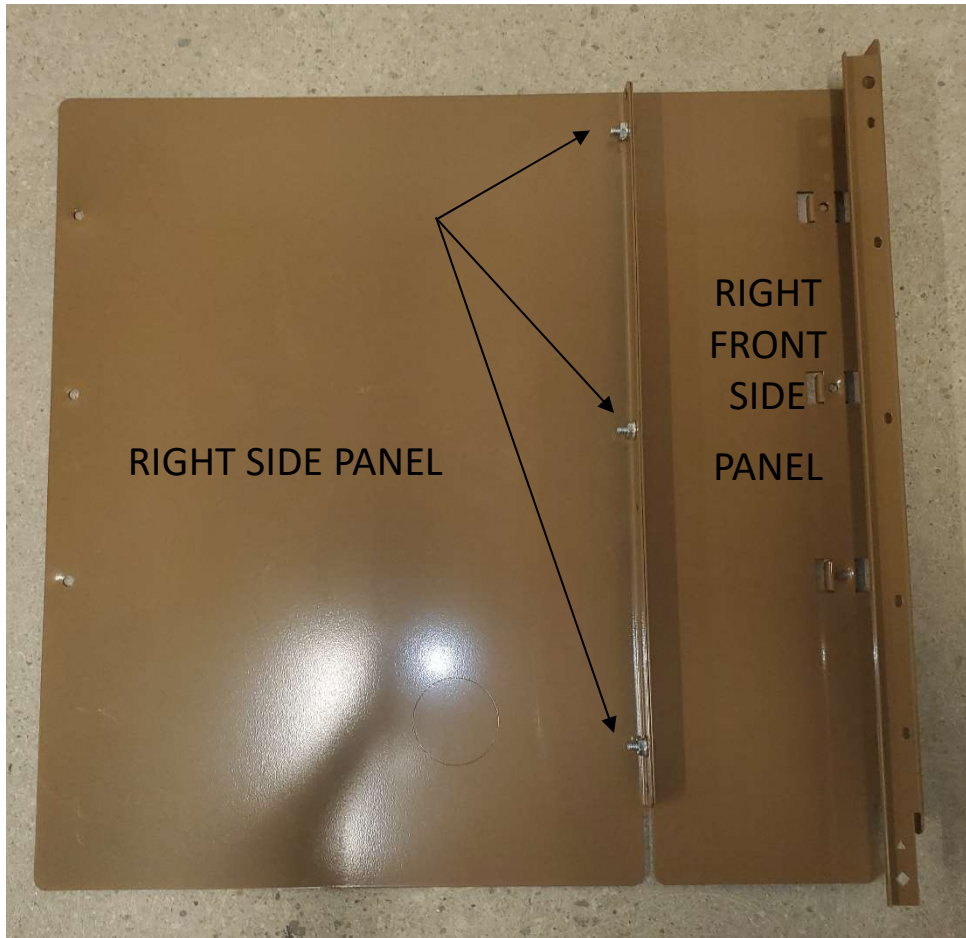
Bolt Kit #32-00142

- | | |
|-------------------------------|---------|
| • NUT ¼-20 WHIZ | QTY. 17 |
| • SCREW 10-24x1/2 HEX WSHR HD | QTY. 5 |
| • NUT 10-24 WHIZ | QTY. 5 |
| • CARRIAGE BOLT ¼-20x5/8 | QTY. 17 |
| • BOLT HEX HEAD ¼-20x1" | QTY. 6 |
| • NUT NYLON LOCK ¼-20 | QTY. 6 |
| • 5/16 FENDER WASHER | QTY. 18 |

USER SUPPLIED ITEM:

- **PADLOCK** (requirements: shackle diameter must be able to fit through the Door Catch/Latch brackets, and length of shackle must not be too long as to prevent installation into the door pocket.)

ASSEMBLY:

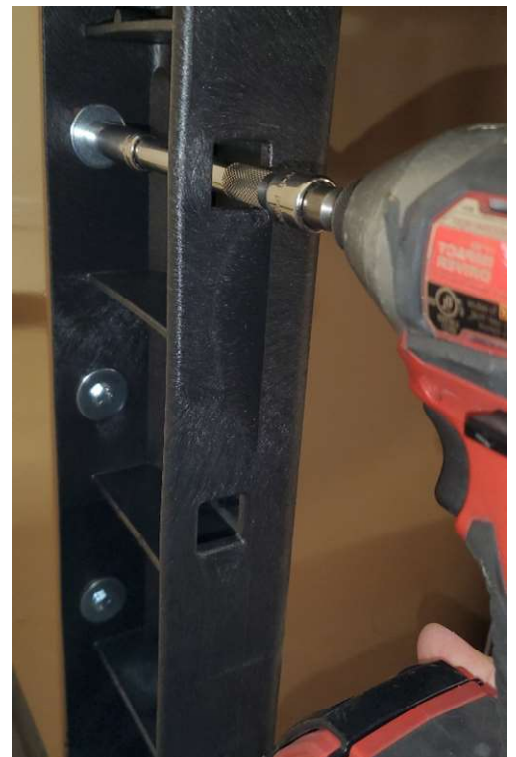
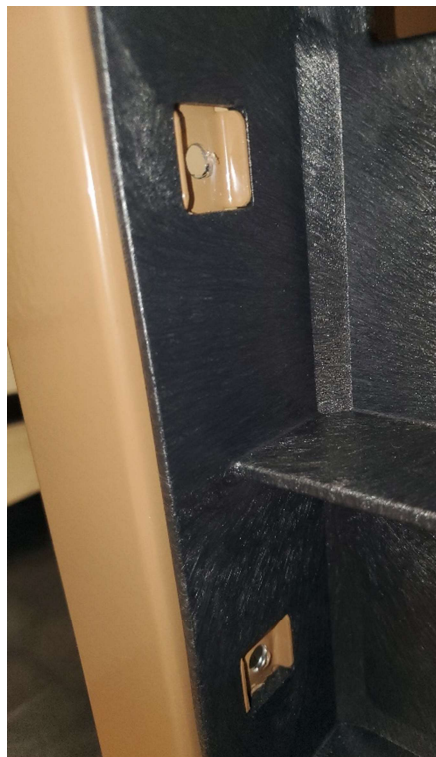


RIGHT SIDE ASSEMBLY:

Attach RIGHT FRONT and RIGHT SIDE panels together using three ¼-20 CARRIAGE BOLTS/WHIZ NUTS as shown.

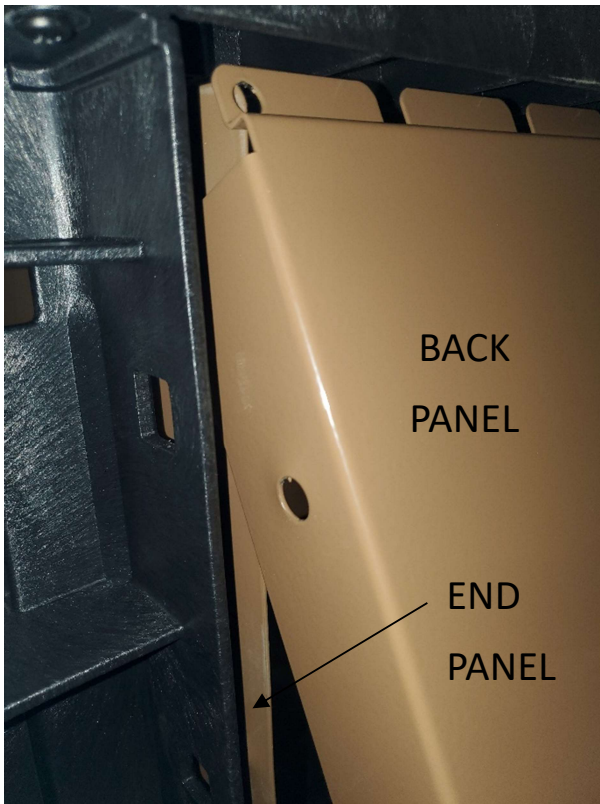
RIGHT END PANEL INSTALL:

Fasten them to the cart in the front, so the three formed tabs insert into the three square holes of cart, using three ¼-20 BOLTS, ¼-20 NYLON LOCK NUTS/FENDER WASHERS.



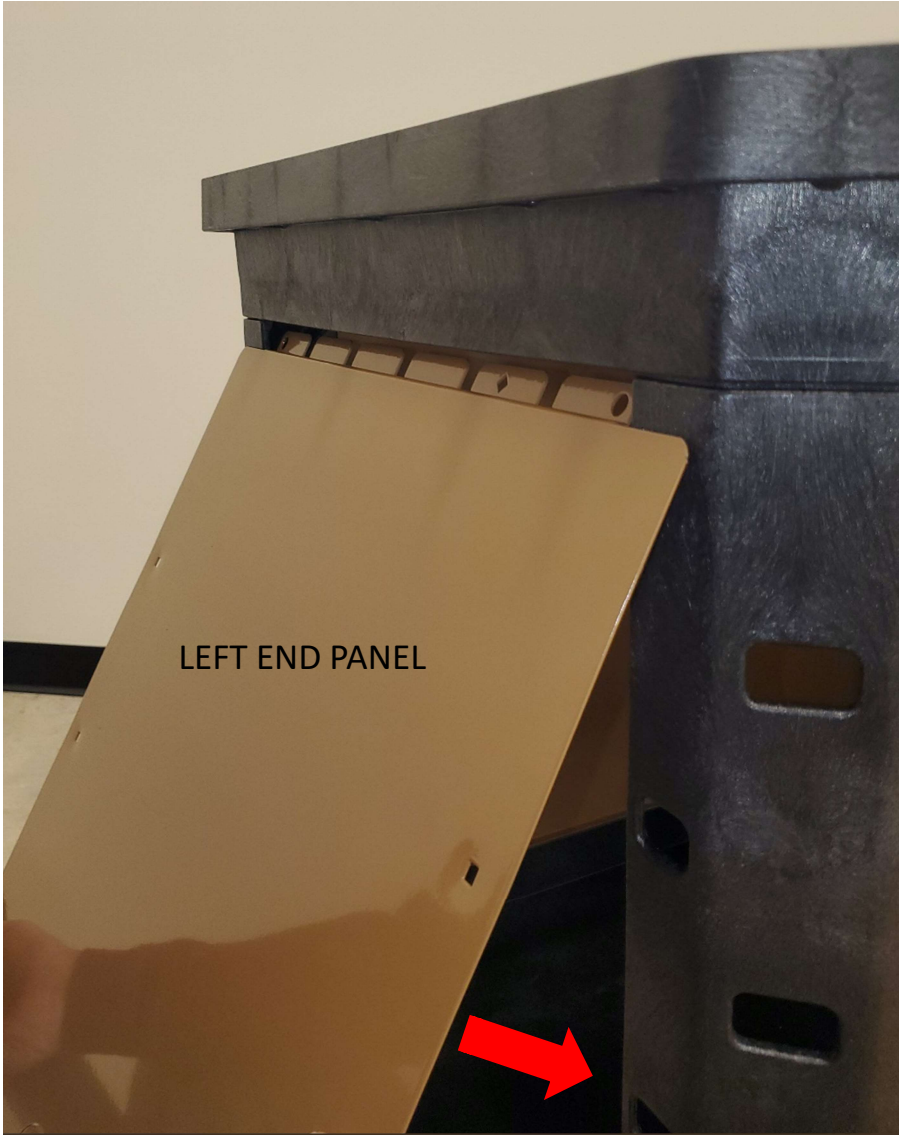
BACK PANEL INSTALL:

Place the offset of the BACK up underneath the top tray and rest the bottom on the lip of the lower tray while making sure the bend on the panel is sandwiched between the RIGHT SIDE panel and the cart. Fasten to the cart at the opposite end loosely using three ¼-20 CARRIAGE BOLTS/WHIZ NUTS/FENDER WASHERS.



BACK PANEL INSTALL-continued:

With the help of another person, fasten the rear of the RIGHT SIDE panel making sure the BACK is sandwiched in between, using three ¼-20 HEX HEAD BOLTS/NYLON LOCK NUTS/FENDER WASHERS.



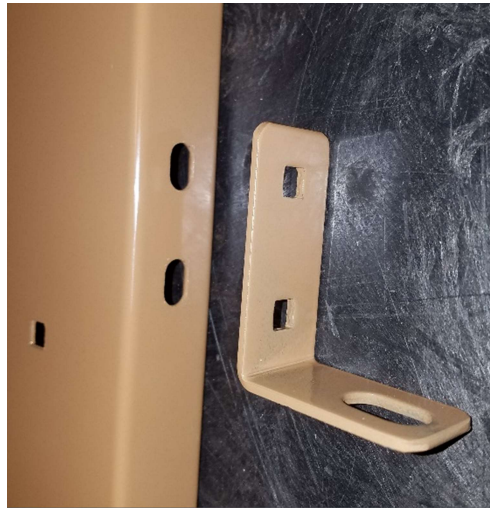
LEFT END PANEL INSTALL:

Place the offset of the LEFT END up underneath the top tray and rest the bottom on the lip of the bottom tray. Fasten the LEFT SIDE panel to the cart using six ¼-20 CARRIAGE BOLTS/WHIZ NUTS/FENDER WASHERS.

TOP



BOTTOM



ATTACH THE DOOR LATCH:
AS SHOWN USING TWO ¼-
20 CARRIAGE BOLTS AND
TWO ¼ WHIZ NUTS. HAND
TIGHTEN AT THIS POINT.





**ATTACH LEFT FRONT SIDE
PANEL:**

Fasten LEFT FRONT panel to the cart using three $\frac{1}{4}$ -20 HEX HEAD BOLTS/NYLON LOCK NUTS/FENDER WASHERS.



ATTACH DOOR:

ATTACH THE DOOR TO THE RIGHT-SIDE FRONT PANEL USING FIVE #10-24x1/2" SCREWS AND FIVE #10-24 WHIZ NUTS AS SHOWN. TIGHTEN USING 5/16" SOCKET AND 3/8" WRENCH.



ADJUST THE FRONT LEFT PANEL SIDE TO SIDE AND THE DOOR LATCH UP OR DOWN UNTIL THEY ALIGN AND PADLOCK IS ABLE TO BE INSTALLED.

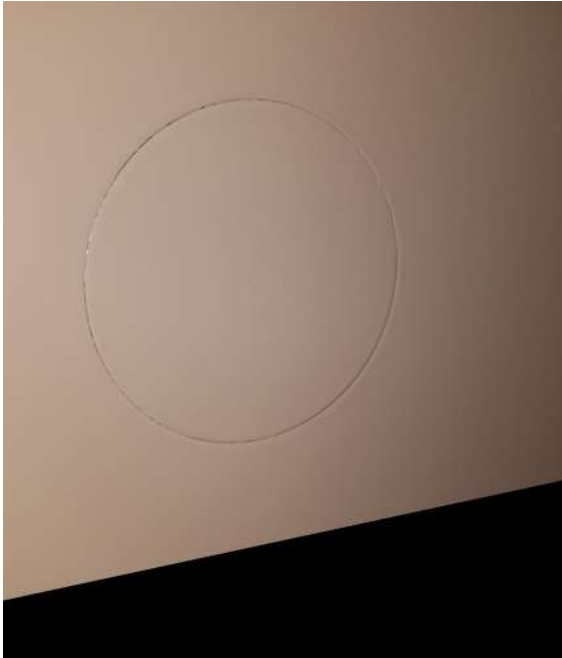


TEST PADLOCK FOR FUNCTIONALITY, ADJUST AS NEEDED.

ONCE ADJUSTED, TIGHTEN THE DOOR LATCH BOLTS USING 7/16" WRENCH, AND TIGHTEN ALL THE FASTENERS USING ELECTRIC DRIVER WITH 7/16" SOCKET BEING CAREFUL NOT TO OVER TORQUE THE FASTENERS TO PREVENT DAMAGE TO PANELS.

GROMMET INSTALL:

CHOOSE WHICH END YOU WOULD LIKE THE GROMMET INSTALLED, THEN USING A HAMMER, TAP ON THE KNOCKOUT PROVIDED AND INSTALL THE GROMMET.



PADLOCK STORAGE:

A HOLE HAS BEEN PROVIDED FOR HANGING PADLOCK WHEN NOT IN USE.



BUILT-IN HANDLE:

A RECESSED HANDLE HAS BEEN BUILT INTO PADLOCK HOUSING.

REPLACEMENT PART LIST		
PART #	DESCRIPTION	FITS MODEL(S)
70127R	REPLACEMENT LEFT END	CA-06
70128R	REPLACEMENT BACK	CA-06
70129R	REPLACEMENT FRONT RIGHT SIDE	CA-06, CA-07
70130R	REPLACEMENT FRONT LEFT SIDE	CA-06, CA-07
70131R	REPLACEMENT LEFT END	CA-07
70132R	REPLACEMENT BACK	CA-07
70133R	REPLACEMENT RIGHT END	CA-06
70134R	REPLACEMENT RIGHT END	CA-07
70135R	REPLACEMENT DOOR	CA-06
70136R	REPLACEMENT DOOR	CA-07
70137R	BOLT KIT	CA-06, CA-07
72254	LOCK TAB	CA-06, CA-07

KnaackLLC
ATTN:Warranty Claims
420 E. Terra Cotta Avenue Crystal Lake, IL 60014
www.knaack.com

If you have any questions, please call toll free at 1-800-456-7856.
 2022 Knaack LLC

