



# A210400

## Reusable Roof Anchor

**⚠ WARNING:** Compliant fall protection equipment must only be used as it was designed and adhere to the hierarchy of controls as discussed in ANSI Z359.2. Users **MUST** read and follow all user instructions provided with the product. Before using a fall arrest system, users must be trained in the safe use of the system, as required by OSHA 29 CFR 1910.30 and 1926.503, or local safety regulations. **Misuse or failure to heed these warnings and instructions may result in injury or even death.**

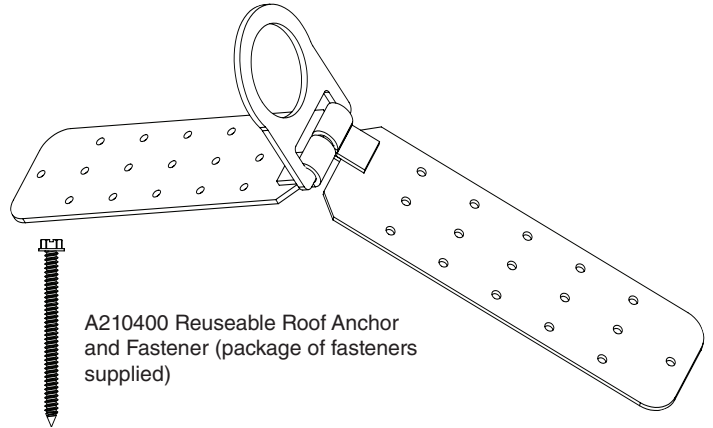
WORK SAFE! WORK SMART!

### IMPORTANT

Before use, the user must read and understand these User Instructions. Keep these User Instructions for reference.

### ⚠ WARNING:

1. Failure to follow all instructions and limitations on the use of the Reusable Roof Anchor may result in serious personal injury or death.
2. Minors, pregnant women and anyone with a history of either back or neck problems should not use this equipment.
3. Do not use the Reusable Roof Anchor without proper training from a "competent person" as defined by OSHA 29 CFR 1910.140(b) and 1926.32(f).
4. Not all fall protection components are rated for the same user weight capacity. Only use components rated for the same weight capacity.
5. Caution must be taken when using the Reusable Roof Anchor or other fall protection equipment near moving machinery, electrical hazards, sharp edges, or abrasive surfaces. Contact with these elements may cause equipment failure, personal injury, or death.
6. Do not install anchors on unsupported roof structures, such as eaves or gable overhangs. Do not install roof anchors on fascia boards.
7. Do not attach the Reusable Roof Anchor over the peak of a metal roof. The anchor must lie flat and flush with the metal roof.
8. Remove any surface contamination such as concrete, stucco, roofing material, etc., that could accelerate cutting or abrasion of attached components.
9. Do not expose the Reusable Roof Anchor to chemicals or harsh solutions which may have a harmful effect.
10. Personal fall arrest systems, including the Reusable Roof Anchor, must be inspected prior to each use for wear, damage and other deterioration. Defective components must be immediately removed from service in accordance with the requirements of OSHA 29 CFR 1910.140 and 1926.502.
11. Striking objects horizontally due to the pendulum effect of a swing fall may cause serious injury or death.
12. Do not use if inspection reveals any defect, wear, damage, deterioration, inadequate maintenance, or unsafe condition.
13. Do not use any equipment that has been subjected to the forces of arresting a fall or if any part of the Reusable Roof Anchor is damaged or non-functional.
14. Only Werner Co., or persons or entities authorized by Werner Co., may make repairs or alterations to the equipment.
15. Alterations or misuse may result in serious injury or death.



A210400 Reusable Roof Anchor and Fastener (package of fasteners supplied)

### PURPOSE

Werner Reusable Roof Anchor is designed to function as an interface between the anchorage and travel restraint, work positioning, fall arrest or rescue system.

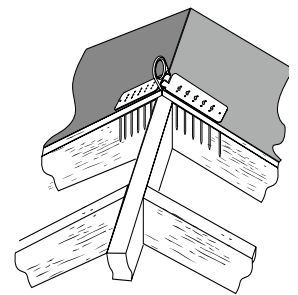
### USE INSTRUCTIONS

1. Before using a personal fall arrest system, employees must be trained in accordance with the requirements of OSHA 29 CFR 1910.30 and 1926.503 in the safe use of the system and its components.
2. The complete fall arrest system must be planned (including all components, calculating fall clearance, and swing fall) before using.
3. Users must have a rescue plan, and the means at hand to implement it, that provides for the prompt rescue of the user in the event of a fall, or assures that the user is able to rescue themselves. A fall over an edge may require special rescue measures.
4. Store the Reusable Roof Anchor in a cool, dry, clean environment, out of direct sunlight, when not in use.
5. After a fall occurs on the system, immediately remove from service for inspection by a competent person.
6. Werner Co. will provide design information upon request.
7. Field serviceability testing is not required and is not recommended to be performed by the user.

### USE LIMITATIONS

The Reusable Roof Anchor has been tested in compliance with the requirements of ANSI/ASSE Z359.7. Compliance and testing covers only the hardware and does not extend to the anchorage and substrate to which the Reusable Roof Anchor is attached.

1. **PLAN:** Establish a plan as to where and when the anchor(s) will be installed during the construction process.
2. **ROOF PITCH:** The Reusable Roof Anchor can be mounted on surfaces ranging from flat to 12:12 pitch (45 degrees).
3. **ANCHORAGE:** The Reusable Roof Anchor must only be used on structures capable of supporting loads applied in all directions



# User Instruction Manual



# Reusable Roof Anchor

permitted by the fall arrest system of at least: A) no less than 5,000 pounds (22.2 kN) for non-certified anchorages; or B) at least two times the maximum arresting force for certified anchorages; C) according to ANSI Z359.6, *Specifications and Design Requirements for Active Fall Protection Systems*. When more than one personal fall arrest system is attached to the anchorage, the strength in (A) or (B) must be multiplied by the number of personal fall arrest systems attached to the anchorage.

4. **SUBSTRATE:** Roof substrates to which the anchor is attached must be in good condition and free of splits, cracks, large knots, corrosion, or defects that may weaken the member. Roof substrates (wood framing, sheathing, metal decking) must be secured to the building and be able to support anchorage requirements. Do not attach the anchor to rotted or deteriorated wood, corroded metal, unstable structure, partially constructed substrates, or structure that will not qualify as an anchorage. Only connect the anchor to wood roofs with a minimum strength equivalent to 2x4 framing with 7/16 inch OSB sheathing. For metal roofs, the roof must be a minimum thickness of 24 gauge.

**⚠ WARNING:** Never attach the Reusable Roof Anchor with the legs still together (legs must be spread apart).

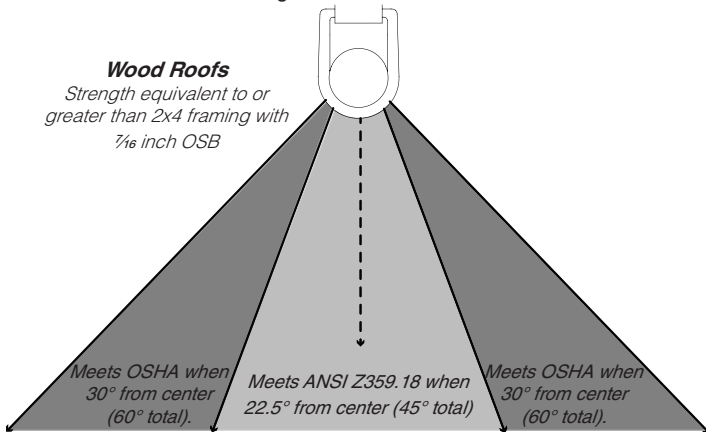
5. **LOADING:** Wood - 22.5° from center (45° total). Metal - 15° from center (30° total).
6. **FASTENERS:** Only use one of the following fastener options:
  - Wood Screws: 3 inch, #12 corrosion resistant steel wood screws. 12 screws, 6 in each side of the anchor, installed in the center row of holes in the anchor, through the sheathing and into the truss member.
  - Wood Nails: 3 inch, 16d nails, 12 nails, 6 in each side of the anchor, installed in the center row of holes in the anchor, through the sheathing and into the truss member. All nails must have a complete head. Do not use nails from a nail gun. New nails must be used for every installation.
  - Metal Screws: 1.25 inch, #12 metal screw. 32 screws, installed in all holes in the anchor, into minimum 24 gauge metal decking.

**⚠ WARNING:** The Reusable Roof Anchor must be positioned on top of previously secured roof sheathing. Do not attach to unsheathed rafter or unsecured metal decking. All fasteners must be used as instructed for each substrate listed above.

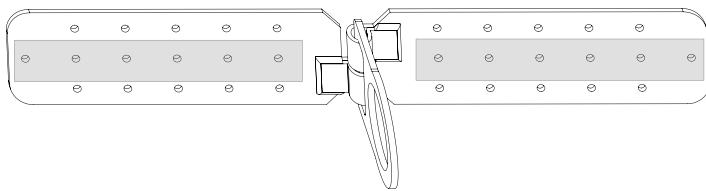
7. **CONNECTION:** Only one travel restraint, work positioning, fall arrest, or rescue system may be attached to the Reusable Roof Anchor.
8. **EXTREME TEMPERATURE:** The Reusable Roof Anchor is designed to be used in temperatures ranging from -40°F to +130°F (-40°C to +54°C). Protection should be provided when used near welding, metal cutting or similar activities. Contact Werner Co. with any questions concerning high temperature environments.
9. **ELECTRICAL HAZARDS:** Use extreme caution when working near high voltage power lines due to the possibility of electric current flowing through the Reusable Roof Anchor or connecting components.
10. **RESCUE:** In the event of a fall over the edge, special rescue measures may be required. A rescue plan must be in place.

### COMPATIBILITY LIMITATIONS

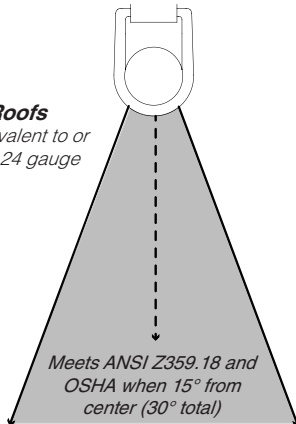
All connecting subsystems must only be coupled to compatible connectors. OSHA 29 CFR 1910.140 and 1926.502 prohibit snap hooks from being engaged to certain objects unless two requirements are met: snap hook must be a locking type and must be “designed for” making such a connection. Under OSHA “designed for” means that the manufacturer of



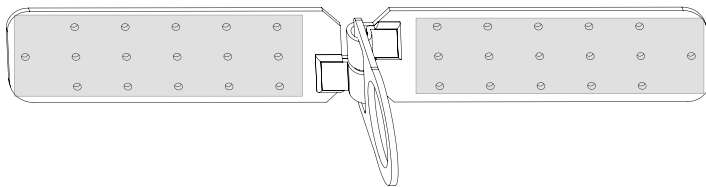
For wood roofs, install all fasteners (screws or nails) through the center holes (shaded area indicated below) through the sheathing and into the truss member.



**Metal Roofs**  
Strength equivalent to or greater than 24 gauge



For metal roofs, install all fasteners through all holes (shaded area indicated below) through the roof material.



# User Instruction Manual



# Reusable Roof Anchor

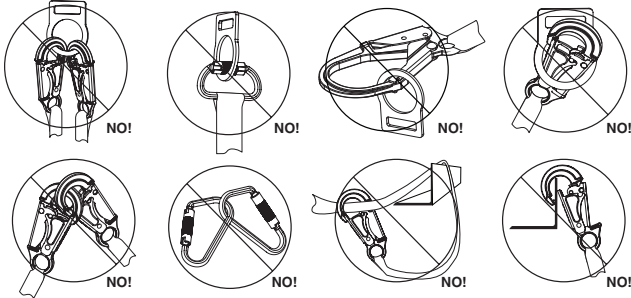
the snap hook specifically designed the snap hook to be used to connect to the equipment in question.

The following connections must be avoided because they can result in rollout\* when a non-locking snap hook is used:

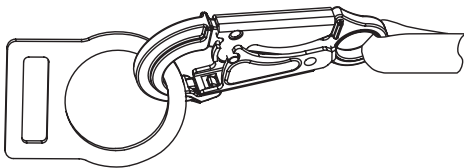
- Direct connection of a snap hook to horizontal lifeline.
- Two (or more) snap hooks connected to one D-ring.
- Two snap hooks connected to each other.
- A snap hook connected back on its integral lanyard.
- A snap hook connected to a webbing loop or webbing lanyard.
- Improper dimensions of the D-ring, rebar, or other connection point in relation to the snap hook dimensions that would allow the snap hook keeper to be depressed by a turning motion of the snap hook.

**\*Rollout:** A process by which a snap hook or carabiner unintentionally disengages from another connector or object to which it is coupled.

### INCOMPATIBLE CONNECTIONS



### COMPATIBLE CONNECTIONS



### INSTALLATION

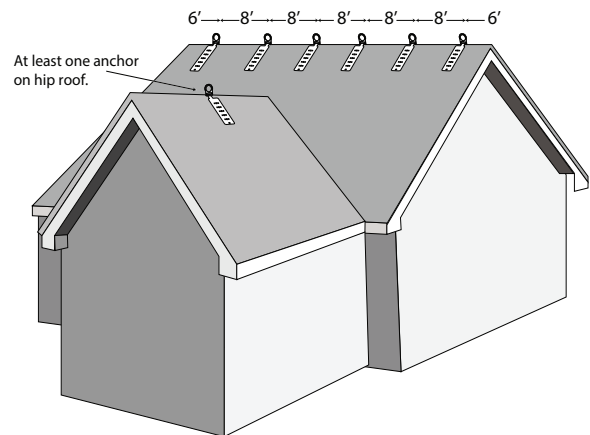
#### Wood Roof:

1. Remove any shingles, debris or foreign material before installing the Reusable Roof Anchor. The anchor must be installed directly to and flush with the sheathing.
2. Place the Reusable Roof Anchor at least 6 feet from any roof edge.
3. On larger roofs, place Reusable Roof Anchor at 8-foot intervals along the roof ridge.
4. Hip roofs require at least one Reusable Roof Anchor on each hip face.
5. Spread the Reusable Roof Anchor legs apart to match the surface it will be mounted on.
6. Position the Reusable Roof Anchor on the roof such that the holes along the center of the legs are over the framing member.
7. Push down to minimize any gap between the Reusable Roof Anchor and the sheathing. Fasten the Reusable Roof Anchor to the roof using approved fasteners. Use all 12 fasteners required for attaching to wood roofs.
8. Connect to the Reusable Roof Anchor using a compatible self locking snap hook or carabiner. Do not use a knot to connect to the Reusable Roof Anchor.

9. Remove the Reusable Roof Anchor by removing all the fasteners. Do not damage the Reusable Roof Anchor during removal.

#### METAL ROOF:

1. Remove debris or foreign material before installing the Reusable Roof Anchor. The Reusable Roof Anchor must be installed directly to and flush with the roof material.
2. Place the Reusable Roof Anchor at least 6 feet from any roof edge.
3. On larger roofs, place Reusable Roof Anchor at 8-foot intervals along the roof ridge.
4. Hip roofs require at least one Reusable Roof Anchor on each hip face. Spread the Reusable Roof Anchor legs apart to match the surface it will be mounted on.
5. Push down to minimize any gap between the Reusable Roof Anchor and the metal roof. Fasten the Reusable Roof Anchor to the roof using approved fasteners. Use all 32 screws required for attaching to metal roofs.
6. Connect to the Reusable Roof Anchor using a compatible self locking snap hook or carabiner. Do not use a knot to connect to the Reusable Roof Anchor.
7. Remove the Reusable Roof Anchor by removing all the fasteners. Do not damage the Reusable Roof Anchor during removal.



### INSPECTION

All components of the Reusable Roof Anchor must be inspected prior to each use and annually by an OSHA defined competent person other than the user. Local, state, governmental and jurisdictional agencies governing occupational safety may require the user to conduct more frequent or mandatory inspections.

**⚠ WARNING:** *If inspection reveals any defect, inadequate maintenance, or unsafe condition, remove from service until a competent person, as defined by OSHA 29 CFR 1910.140(b) and 1926.32(f), can determine the need for authorized repair or disposal.*

**⚠ WARNING:** *Any equipment that has been subjected to the forces of arresting a fall, or that has a deployed load indicator, must be removed from service until a competent person can determine the need for authorized repair or disposal.*



# Reusable Roof Anchor

All hardware must be free of cracks, sharp edges, deformation, corrosion, or any evidence of defect. Reusable Roof Anchor must be free of corrosion, chemical attack, alteration, excessive heating or wear.

## LABEL

All markings must be legible and attached to the product.

## CLEANING AND MAINTENANCE

Reusable Roof Anchor may be wiped down to remove grease or dirt with a clean dry cloth.

**Minimum Breaking Strength (MBS): 5,000 lbs**  
**Resistencia Mínima a la rotura: (22.2kN)**

**Refer to Instructions for direction of loading restrictions!**  
**Consulte las instrucciones para conocer las restricciones de dirección de carga!**

**Model: A210400 MK3**

**Material: Steel**  
**Materiales: Acero**

**Standards/Estándares**  
**ANSI Z359.18-2017, Type A; OSHA 1910, 1926**

**PRE-PUNCH HOLES PRIOR TO INSTALLATION**

**Warning:** User must follow manufacturer's instructions included with the equipment at the time of shipment from the manufacturer. Refer to the instruction manual for proper installation and stability and compatibility limitations. Inspect prior to use.

**Advertencia:** El usuario debe seguir las instrucciones del fabricante incluidas con el equipo al tiempo de embarque del productor. Refiera al manual de la instrucción para las limitaciones apropiadas de la instalación y de la estabilidad y de la compatibilidad. Inspeccione antes de usar.

**555 Pierce Rd. STE 300, Itasca, IL 60143 • 888-523-3371**  
**©2021 Werner Co. P/N 125912-01 Rev A 09/21**

## INSPECTION RECORD

PART NUMBER		PURCHASE DATE	
SERIAL NUMBER		ASSIGNED TO	
DATE MANUFACTURED			

Inspection Date	Model Number	Serial Number	Comments	Inspector's Initials

Model No.	Material	Length	Width	Thickness	Minimum Breaking Strength (MBS)	Approx. Weight	Compliance Standards
A210400	Zinc Plated Steel	19 3/4 in (502 mm)	3 1/4 in (78 mm)	1/8 in (3 mm)	5,000 lbs (22.2 kN)	3 lbs (1.7 kg)	ANSI Z359.18-2017 Type A OSHA 1910 & 1926

# User Instruction Manual

WernerCo Corporate Headquarters: 555 Pierce Road, Suite 300, Itasca, IL 60143  
 TEL: 888-523-3370 FAX: (724) 588-0315 www.wernerco.com